

Heritage Strategy – Archaeology

1. Introduction

This discussion paper summarises a previous proposal for a sub-regional heritage strategy for the western Bay of Plenty, outlines the extent of the archaeological resource within the Western Bay of Plenty District and Tauranga City, quantifies existing protective measures for archaeological and Māori heritage in the sub-region, and discusses some of the issues around the protection of archaeological sites. Archaeological and traditional sites protected in some form by statutory bodies are listed in an appendix.

2. A Sub-regional Cultural Heritage Strategy

A 2009 *Smartgrowth* report “**Sub-regional Heritage Strategy**” prepared by Penny Doorman, at the time Heritage Coordinator for the Bay of Plenty Regional Council (BoPRC), discusses the threat to cultural heritage sites from urban growth and development in the western Bay of Plenty. As a means of protecting cultural heritage it identifies a potential partnership between the BoPRC, Western Bay of Plenty District Council (WBoPDC), Tauranga City Council (TCC) and Heritage New Zealand Pouhere Taonga (HNZPT), under the umbrella of *Smartgrowth’s* 2006 Strategy & Implementation Plan, Section 7.1.10.1. The report draws on an earlier (2007) working paper, “Draft Issues for Cultural Heritage Strategy” and a 2008 report from In Situ Heritage consultants – “Smartgrowth Heritage Information Review” (see below).

Doorman’s report comprehensively examines the definition of cultural heritage, the relevant legislation providing for the protection of cultural heritage (Resource Management Act, Local Government Act, Historic Places / Heritage NZ Act, Conservation Act, Reserves Act, Te Ture Whenua Māori Act, and others) and the planning framework applicable, with reference to Annual and Long Term Plans, Regional Plans and policies, and District Plans. **It identifies District (and City) Plans as “the foremost method of achieving heritage protection”.**

The report goes on to outline the principles and structures underlying heritage management, emphasises the need for adequate information and outlines a comprehensive list of potential sources. (This section, Ch. 4, requires updating, particularly with reference to the *Archsite* register of archaeological sites and to initiatives already implemented by Councils.) Issues such as monitoring of heritage sites, the role of statutory bodies, development of relationships between statutory bodies and the public (particularly Māori), kaitiakitanga and management of identified places are examined in some detail.

The report hinges on the application (or lack of it) of statutory roles, responsibilities and processes, and the ways in which the relationships between the bodies involved – BoPRC, WBoPDC, TCC, HNZPT, the Department of Conservation (DoC) and others – can help or hinder that application. The role of District and Regional Plans in particular is examined closely. The report concludes with discussion of the assessment of heritage values or significance, management of sites on public land, incentives for the protection of sites on private land and the need for education to promote awareness of heritage values.

Following Doorman's report, a **Draft Cultural Heritage Strategy** was compiled, also in 2009, for the approval of *Smartgrowth* and its Combined Tangata Whenua Forum, by Mary-Anne Macleod, former Group Manager Strategic Development, BoPRC (currently a member of NIWA's Board of Directors, and resident in Tauranga). The Strategy, which had been envisaged in *Smartgrowth* policy since 2004, and was developed as "a long term approach to cultural heritage management in the Western [sic] Bay of Plenty", sets out three fundamental goals:

- *Know what we have*
- *Understand the value*
- *Protect what is there.*

The strategy defines a set of principles, identifies relevant issues, reviews heritage protection work already undertaken and proposes a number of immediate and future actions, to be implemented through Councils' annual and long term plans. Importantly, it envisages "the creation of a heritage forum whose membership will be drawn from local authorities, iwi hapū and other heritage interest groups [with] the task of coordinating and developing [an] annual report for approval through the SmartGrowth structure." It makes reference to the Bay of Plenty Regional Policy Statement criteria for assessing cultural heritage within the context of matters of national importance as defined in the Resource Management Act. ¹

3. Conclusions

The two documents prepared for *Smartgrowth* provide between them a considered and relatively complete outline of the issues relevant to cultural heritage management and the means to implement protection. They place responsibility for action clearly with the three Councils (Regional, Western Bay and Tauranga), with the support and assistance of Heritage New Zealand and the Department of Conservation, and stress the need for ongoing involvement with tangata whenua and relevant community groups, including historical societies, heritage advocates and organisations such as the NZ Archaeological Association. Both documents require some updating, but their basic approach and recommendations remain sound.

It would seem, however, that the Heritage Strategy was not adopted by *Smartgrowth* and that protection of cultural heritage is not one of the organisation's priorities. No significant mention of heritage could be found in *Smartgrowth's* most recent (2013) Strategy. ² The **Heritage Information Review** on which the proposed heritage strategy was partly based usefully summarises and assesses sources of heritage information existing at the time it was written. It makes the point that, in order to be effective, information regarding heritage places should be recorded as digital spatial data, able to be used in geographic information systems, and that its interpretation may be a specialist exercise. The report also notes that changes of personnel in local authorities in particular may result in the abandonment of data and systems, especially digital systems, already set up and that it may then become difficult and time-consuming to resurrect those systems and the data they hold. The report is now 13 years old and becoming outdated in some areas, though its analysis of deficiencies in information sources and recommendations for future work (even though not acted on) are still valid. ³

¹ <https://www.boprc.govt.nz/your-council/plans-and-policies/policies/regional-policy-statement>

² <http://smartgrowthbop.org.nz/strategy/2013-strategy/>

³ Walter, Lynda & Karen Greig, 2008. Smartgrowth Heritage Information Review Prepared for Environment Bay of Plenty, Whakatane. InSitu Heritage Ltd., Whakatane.

4. Recommendation

- Rather than duplicating work already undertaken by compiling a new heritage strategy from scratch, it would perhaps be more appropriate for Taonga Tū | Heritage Bay of Plenty to focus on scoping the extent of the existing heritage resource and evaluating the degree and effectiveness of the protection already afforded by territorial authorities and HNZPT. This would lead to developing a long term strategy of lobbying the three Councils and *Smartgrowth* to adopt an updated version of the Heritage Strategy already developed within their own planning processes, and to undertake effective action to implement it.
- Implementation would involve allocation of funding to employ qualified staff with knowledge of both heritage and planning issues to carry out the strategy's recommendations on a long term basis.

Essentially, all the background information and methodology for an effective sub-regional heritage strategy is contained in the three reports discussed. The need now perhaps is for pressure on local and regional authorities, including *Smartgrowth*, simply to implement the relevant policies and plans and to provide ongoing funding over a number of years to allow qualified staff to put them into effect.

5. Strategy

Management and protection of heritage usually necessitates the ascription of significance. For purposes of an archaeological heritage strategy, known and recorded sites may be divided into three groups:

1. places of particular significance in archaeological, scientific or historical terms,
2. places of significance to iwi, hapū and whānau of tangata whenua (including known pā, wāhi tapu and wāhi tūpuna) which have some physical remains in or on the ground and are thus archaeological sites as well, automatically protected under the Act, and
3. places which have no particular individual significance but are still protected by the legislation and are significant in that they illustrate the territorial range and activities throughout history of Māori in particular and Pākehā to a lesser extent.

Places of traditional significance that show no physical evidence of occupation are not archaeological sites and do not fall under the pou of archaeology. This introduces the anomaly that, in considering archaeological sites alone, some traditionally or culturally significant places would be excluded while others could be included without reference to the tangata whenua descendants. An alternative would be to put all places of significance to Māori under the tangata whenua tumu, but this would mean in turn that many, if not most, archaeological sites would be excluded from consideration. In order to determine appropriate levels of significance it would be sensible to consider all traditional sites, including wahi tapu and wahi tūpuna, in the same kete as Māori archaeological sites and for archaeologists and tangata whenua to work together, iwi by iwi and hapū by hapū to identify those of particular significance, according to their differing criteria.

6. Significance

Of the nearly 7000 recorded archaeological sites in the western Bay, around 500 have been accorded some form of protection additional to their statutory protection under the HNZPT Act. A heritage strategy could envisage the further systematic identification and assessment of archaeological sites, with a view to identifying those of particular significance for additional protection under City, District and Regional Plans. In this context, “significance” might be judged by something like the following criteria, which are more specific in some respects than those defined in the Heritage New Zealand and Resource Management Acts:

1. Places known in Māori tradition and kōrero,
2. Places associated with the land wars and the subsequent bush campaign in Tauranga Moana, including contemporary kainga,
3. Places associated with other historical events, including early European settlement,
4. Places, particularly pā, of high aesthetic appeal or visibility in the landscape (landmarks),
5. Early Māori settlement sites,
6. Sites likely to provide significant archaeological, scientific, technological or environmental information,
7. Well-preserved sites, typical of their type,
8. Unusual or unique sites,
9. Other.

7. Objective(s)

The objectives of a heritage strategy must be clear. In line with the three BoPRC reports for *Smartgrowth*, they could involve Taonga Tū in lobbying to enhance and extend the formal protection of cultural heritage sites through existing statutory processes and the relevant agencies, including City, District and Regional Councils, Heritage New Zealand Pouhere Taonga, the Department of Conservation Te Papa Atawhai, the Ministry of Culture & Heritage and other Central Government agencies.

8. Actions

In addition to the actions recommended in the *Smartgrowth* reports, some more specific actions in regard to archaeological sites might include:

1. All recorded or known archaeological sites could be assessed under agreed criteria and a short list of significant sites compiled, including all known pā, wahitapu, urupā and burials likely to be of significance to Māori. This could entail the review of over 6000 thousand site records and related research and assessment, but the process might be undertaken in stages on a thematic basis, for example, identifying all sites relating to the Bush Campaign of the 1860s, or all 19thC shipbuilding sites. An example would be the Regional Council’s inventory of coastal historic sites.⁴

⁴ Walter, L & K Greig, 2006. Coastal Historic Heritage Review Project Historic Heritage Inventory. Environment Bay of Plenty, Whakatane. <https://www.boprc.govt.nz/your-council/documents-and-publications/publications>

2. Further consultation at iwi and hapū level to identify the traditional significance of some sites, bearing in mind that it may not be appropriate to identify those likely to be sensitive.⁵ (This step would be time-consuming – there are at least 23 iwi and hapū with interests in the Western Bay of Plenty District and Tauranga City.)⁶ Iwi and hapū management plans, lodged with the Regional Council, will also be relevant sources.⁷ A paper by Des Kahotea provides an overview of some of the issues involved for Māori.⁸
3. Compilation of lists of significant sites, with an explanation of the values and significance of each one, and, importantly, detailed maps, showing sites of significance in a form less opaque than District and City Plans.
4. Further scheduling of significant sites through the District and City Plan processes.
5. Identification of sites in Local or Central Government ownership/stewardship for enhanced protective action, including Conservation Plans and Management Plans.
6. A community information and engagement programme designed to increase public awareness and appreciation of places of traditional, historic and archaeological significance.

9. Inventory

The following sections outline the extent and nature of the archaeological resource in the western Bay and the varying levels of protection assigned to parts of it.

9.1 The archaeological resource

Archaeological sites are the physical remains, on and beneath the surface of the land, of past human occupation. They may be of any age and represent any activity. In legislative terms though, they are defined more narrowly, restricted to places *associated with human activity that occurred before 1900 or ... the site of the wreck of any vessel where the wreck occurred before 1900*. Sites thus defined are protected by law from unauthorised interference, through the Heritage New Zealand Pouhere Taonga Act 2014.⁹ (Sites recorded by the NZ Archaeological Association's Site Recording Scheme may, however, be more recent than the 1900 cutoff date.)

The western Bay of Plenty has one of the highest densities of recorded archaeological sites in the country. Apart from Auckland and the Far North District, the Western Bay of Plenty District and Tauranga City together have more recorded archaeological sites

⁵ The issue of how to protect wahitapu and wahi t puna in particular without identifying their exact location has been addressed by Ng ti Hikairo in Otorohanga District through a series of agreed protocols with the District Council (see Coster, J 2012. Procedural Audit Te Tahuanui: Ngati Hikairo Heritage Management Plan 2010. Report to Otorohanga District Council. HERITAGE WORKS 76b).

⁶ Ng Potiki, Ngai Tamar waho, Ngai Tamawharuia, Ngai Te Ahi , Ngai Tukairangi , Ngaiterangi , Ngapotiki , Ng ti Hangarau, Ng ti He , Ng ti Kahu , Ng ti M kino, Ng ti Pukenga, Ngati Ranginui, Ng ti Rangiwewehi, Ng ti Ruahine, Ng ti Tapu , Ng ti Whakahemo, Ngati Whakaue, Pirirakau, Tapuika, Te Wh nau a Tauwhao, Waitaha.

⁷ <https://www.boprc.govt.nz/your-council/plans-and-policies/plans/hapuiwi-resource-management-plans>

⁸ Kahotea DT, 2003. Literature Review prepared for SmartGrowth.

<https://view.officeapps.live.com/op/view.aspx?src=http%3A%2F%2Fsmartgrowthbop.org.nz%2Fmedia%2F1086%2Ft%25C4%2581ngata-whenua-literature-review.doc&wdOrigin=BROWSELINK>

⁹ <https://legislation.govt.nz/act/public/2014/0026/latest/DLM4005414.html?src=qs>

than any other local authority, 9% of the national total. The New Zealand Archaeological Association (NZAA) has recorded 6675 archaeological sites in Tauranga and the Western Bay, as at September 2021, of which 98% represent pre-colonial (pre-1865) Māori occupation. Over 500 of these are fortified pā, while some 5600 contain middens, pits or terraces, representing living sites, gardening and food storage.

These figures reflect not only the high pre-European Māori population, indicating the richness of the western Bay's resources of kai moana, arable soils and forest foods, but also the fact that it is the only district in the country to have been systematically surveyed by archaeologists.¹⁰ Most recorded sites, including those of European origin, are from the nineteenth century or earlier, thus fitting the statutory definition and protected to a limited extent by the HNZPT Act.

The extent of information available about recorded sites varies substantially, depending on the quality of individual site records. In addition to the 7000-odd records held by the NZAA, some 550 detailed reports document the results of archaeological investigations undertaken in response to extensive agricultural and horticultural development in the sub-region, along with rapid urbanisation, over the last 40 years. These reports are held in Heritage New Zealand Pouhere Taonga's (HNZPT's) Digital Library and are available for public consultation.¹¹ No general synthesis or overview of their results exists however, apart from a 2008 publication compiled for the Department of Conservation which covers most of the Bay of Plenty, and is still valid, although becoming outdated.¹² Most of the sites investigated by archaeologists will have been completely or partially destroyed in the process, but they provide useful insights into the subsurface nature of archaeological features normally only visible from surface indications.

¹⁰ The then NZ Historic Places Trust undertook a systematic inventory of archaeological sites in the then Tauranga County in the mid-1980s.

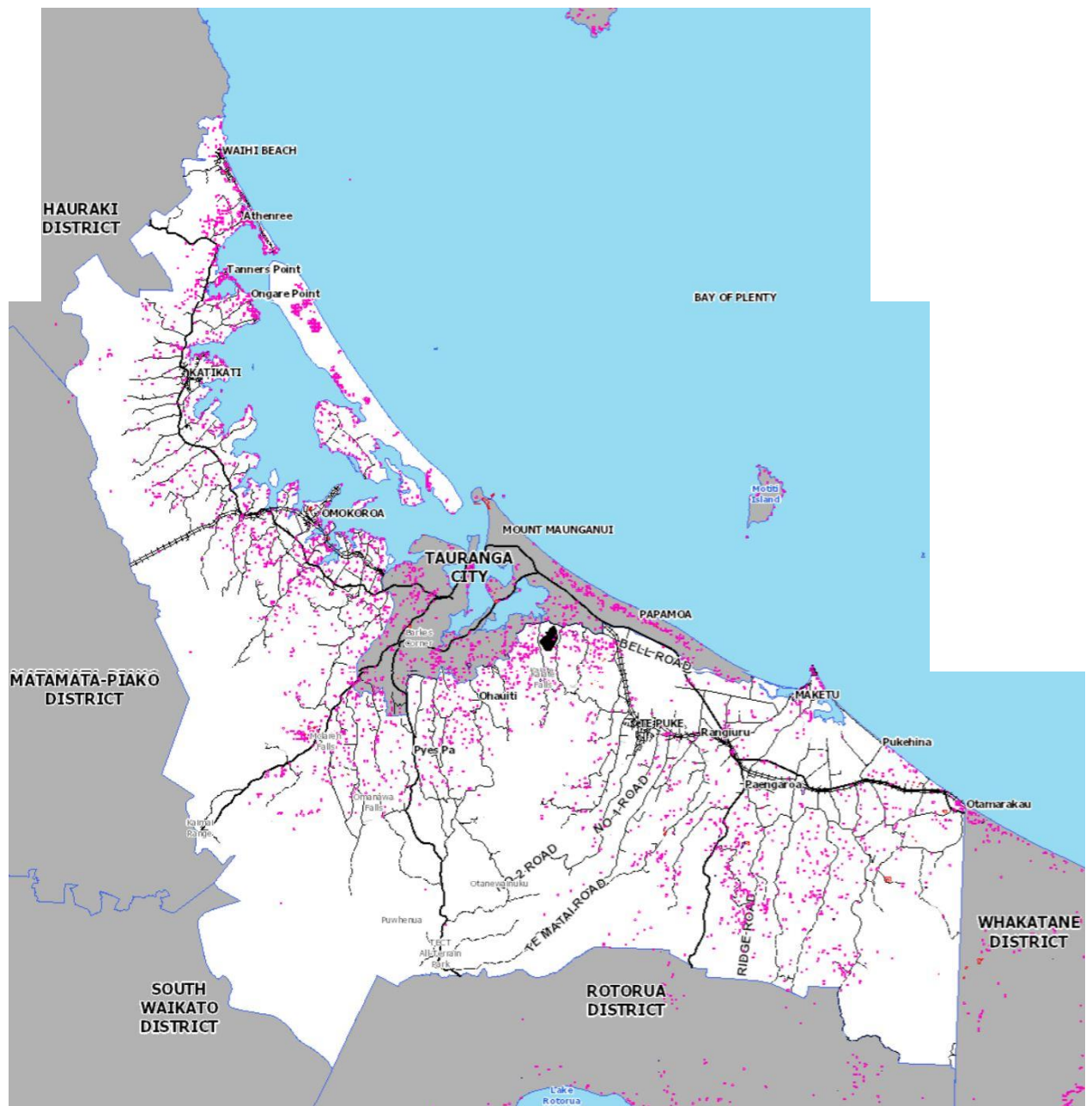
¹¹ <https://www.heritage.org.nz/protecting-heritage/archaeology/digital-library>

¹² Law, RG, 2008. Archaeology of the Bay of Plenty. Department of Conservation, Wellington.

<https://www.doc.govt.nz/globalassets/documents/science-and-technical/sap246entire.pdf>

| Site Type | No. | % | Explanation |
|---------------------------------|-------------|-------------|--|
| Pre-colonial Māori sites | | | |
| Midden/Ovens | 3141 | 46% | Shells, ovenstones, stone flakes, charcoal, often associated with, or an indicator of, more substantial subsurface features such as pits, ovens (h ngi), house sites and earthworks. May contain evidence of past environmental conditions. |
| Pit/Terrace | 2502 | 37% | Storage pits for k mara, often associated with (house) terraces or platforms, often found on ridges, spurs or levelled hilltops. Indicative of gardens, small settlements or family dwellings. |
| P | 520 | 8% | In archaeological terms, places defended by earthworks such as ditches, banks and terracing. Not all have been lived in, and some appear to be simply fortified food stores (pit clusters). Often situated on hilltops, ridges or cliff edges. |
| Artefact find | 290 | 4% | Site where an artefact was found, with no other recorded evidence. e.g. obsidian flakes, toki, sinkers, wooden taonga preserved in swamps. |
| Gardening | 80 | 1% | Modified soils, drainage or boundary ditches, known mara, often associated with pits, midden, terraces and surface disturbance. |
| Burial(s) | 36 | 1% | Isolated burials, koiwi tangata, urup . |
| Working area | 24 | 0.1% | Numerous stone and obsidian flakes, sometimes with hammerstones and cores, indicating tool manufacture. |
| Other | 37 | 1% | Rock art (7), trees (6), occupied caves (5), obsidian sources (4), trackways (4), unspecified ground disturbance, etc. |
| European sites | | | |
| Building site | 61 | 1% | Standing historic buildings, sites of former buildings, including houses, schools, administrative and industrial buildings. |
| Transport | 32 | 1% | Wharves, roads, tracks, tramways, bridges |
| Military | 21 | 0% | Sites of post-1864 military activity. |
| Timber milling | 10 | 0% | Remains of logging camps, kauri dams, saw pits, saw mills. |
| Mining | 7 | 0% | Gold-mining, quarries. |
| Agricultural | 6 | 0% | Modified/ploughed soil, ditch-and-bank fences, farming structures |
| Other | 2 | 0% | Mission stations, shipwrecks, cemeteries, etc. |
| Total | 6775 | 100% | |

Archaeological sites recorded in Tauranga City and the Western Bay of Plenty District.



Distribution of recorded archaeological sites in the western Bay of Plenty sub-region (one pink dot per site).

9.2 Site Protection

Historic places may be protected in a number of ways and with varying degrees of effectiveness. All archaeological sites are protected by statute from unauthorised interference, but this form of protection, operating through HNZPT and its Act, tends in practice to result in controlled recording and subsequent destruction rather than preservation. Heritage New Zealand can, however, apply a greater degree of protection by including places on the New Zealand Heritage List Rangi Kero. Territorial Authorities may also increase protection by scheduling historic, traditional and archaeological sites under District or City Plans. Direct management by local authorities or central government agencies potentially offers another means of protection. The forms of protection available are discussed and tabulated below (numbers cited may not be exact).

- 110 archaeological and traditional sites or areas in the western Bay have been listed by Heritage NZ.¹³ However, 72 of these are minor sites in the Athenree area, some of which no longer exist, and it is unlikely that any would now be regarded as significant. HNZPT does not own or administer any places in the western Bay.
- 23 archaeological areas are scheduled under the Tauranga City Plan. They include nearly 40 individual recorded sites, some of them in parks and reserves managed by the Council.¹⁴
- 81 significant Māori areas are scheduled, with detailed explanations of their significance, in the Tauranga City Plan. They include a variety of places and overlap to a considerable extent with the list of archaeological areas. The Te Tumu Archaeological Management Area incorporates a number of the places identified.¹⁵
- 120 archaeological and Māori sites are scheduled in the Western Bay of Plenty District Plan, some with iwi affiliation and a brief description of their significance, but it is not always clear what the basis for their inclusion is.¹⁶
- The Bay of Plenty Regional Council manages 11 places, and numerous other features, within the Papamoa Hills Regional Park. The park is managed primarily for the protection of cultural heritage values and is also a major recreational resource. A management plan and conservation plan have been prepared, but no detailed information on the cultural or archaeological features of the park is available on the Council's website.¹⁷
- The Bay of Plenty Regional Council's Regional Coastal Environment Plan lists 10 historic heritage sites in the coastal and marine area, comprising 4 shipwrecks, 4 wharves or jetties, one causeway and a gold mine.¹⁸
- The Department of Conservation actively manages only two heritage sites in the western Bay of Plenty – Maungaruahine pā, near Te Puke, and a European-period logging camp in the Kaimai-Mamaku Conservation Park. Overall, the Department is responsible for just over 100 archaeological sites on conservation land in the western Bay, which nominally gives them a higher degree of protection than sites on private land.¹⁹

¹³ HNZPT Act Part 4, Subpart 1.

¹⁴ Tauranga City Plan Appendix 7D: Register of Significant Archaeological Areas

http://econtent.tauranga.govt.nz/data/city_plan/ch/7/appendix_7d.pdf;

Tauranga Reserves Management Plan, March 2019 <https://www.tauranga.govt.nz/council/council-documents/strategies-plans-and-reports/plans/reserve-management-plans>

¹⁵ Tauranga City Plan Appendix 7B: Register of Significant Maori Areas

http://econtent.tauranga.govt.nz/data/city_plan/ch/7/appendix_7b.pdf

Tauranga City Plan Appendix 7E: Te Tumu Archaeological Management Areas

http://econtent.tauranga.govt.nz/data/city_plan/ch/7/appendix_7e_sheet1.pdf

¹⁶ Western Bay of Plenty District Plan Appendix 3 Schedule of Identified Significant Historic Heritage Features

<https://eplan.westernbay.govt.nz/eplan/#Rules/0/7/1/10673/0>

¹⁷ See <https://www.boprc.govt.nz/your-council/plans-and-policies/long-term-plan>; <https://www.boprc.govt.nz/living-in-the-bay/our-places/regional-parks/papamoa-hills-regional-park>;

Walter, L & K Greig, 2006. Papamoa Hills Regional Park Conservation Plan. Environment Bay of Plenty, Whakatane.

<https://www.boprc.govt.nz/your-council/documents-and-publications/publications>

¹⁸ Walter, Lynda & Karen Greig, 2006. Coastal Historic Heritage Review Project Historic Heritage Inventory.

Environment Bay of Plenty, Whakatane / InSitu Heritage Ltd.

¹⁹ <https://www.doc.govt.nz/contentassets/16c3b5bb3ef6441589dd89657d6c789c/bop-cms-3-appendices.pdf>;

Actively Managed Historic Places: East Coast Bay of Plenty

<https://www.doc.govt.nz/globalassets/documents/conservation/historic/national-register-amhp/east-coast-bop-historic-sites.pdf>

NZ Archaeological Association Site Recording Scheme www.archsite.org.nz

| | | |
|------------------------|------------|---|
| P | 21 | HNZPT listed archaeological and traditional sites, western Bay of Plenty. |
| Wahi tapu, wahi t puna | 15 | |
| Mission station | 1 | |
| Wharf | 1 | |
| Pits | 1 | |
| Minor sites (Athenree) | 72 | |
| Total | 111 | |

| | | |
|-----------------|-----------|--|
| P | 21 | Scheduled archaeological sites, Tauranga City Plan |
| Pit/terrace | 9 | |
| Midden | 5 | |
| Stone steps | 3 | |
| Mission station | 1 | |
| Redoubt | 1 | |
| Total | 40 | |

| | | |
|-----------------------------------|-----------|---|
| P | 51 | Scheduled significant M ori areas, Tauranga City Plan |
| Urup | 10 | |
| W hi tapu | 7 | |
| Okohanga / food harvest area | 2 | |
| Puna | 2 | |
| Ana / shelter | 1 | |
| Boundary marker | 1 | |
| Kainga | 1 | |
| Maunga | 1 | |
| Motu | 1 | |
| Rawa tuturu / customary resources | 1 | |
| Tauranga waka | 1 | |
| Waahi parekura / battle site | 1 | |
| Wharenui site | 1 | |
| Total | 81 | |

| | | |
|--------------------------|------------|--|
| P | 66 | Scheduled Heritage Sites, Western Bay of Plenty District Council |
| Urup | 20 | |
| Marae | 14 | |
| Wahi tapu | 6 | |
| Archaeological landscape | 4 | |
| Landmark | 3 | |
| Puna | 2 | |
| Drain | 1 | |
| Land | 1 | |
| Maunga | 1 | |
| Rock | 1 | |
| Tauranga waka | 1 | |
| Total | 120 | |

| | | |
|--------------------|-----------|--|
| Pits &/or terraces | 24 | Sites within the P p moa Hills Regional Park |
| P | 11 | |
| Midden | 3 | |
| Findspot | 2 | |
| Mixed soil | 1 | |
| Total | 41 | |

| | | |
|--------------|-----------|--|
| Shipwreck | 4 | Regional Council Coastal Plan, Historic Heritage sites |
| Jetty/Wharf | 4 | |
| Causeway | 1 | |
| Gold mine | 1 | |
| Total | 10 | |

| | | |
|-----------------------|----------|---|
| Logging camp (Kaimai) | 1 | %Actively-managed sites, Department of Conservation |
| Maungaruahine p | 1 | |
| Total | 2 | |

| | | |
|---------------------------|------------|--|
| P | 27 | Total sites located on the Conservation estate |
| Pits, terraces, platforms | 24 | |
| Middens & ovens | 22 | |
| Other M ori sites | 7 | |
| Mining | 1 | |
| Timber & transport | 20 | |
| Total | 101 | |

9.3 Analysis

Over 400 archaeological sites in the western Bay are listed, scheduled or managed by local or central government authorities, giving them a nominally higher degree of protection than that afforded directly by the Heritage NZ Act. They comprise about 6% of the 6775 recorded archaeological sites in the sub-region.

P are generally over-represented among listed and scheduled sites, due mainly, it would seem, to their high visibility and significance in traditional accounts. Similarly, the distribution of sites on the conservation estate is not representative of sites recorded throughout the western Bay. Whereas p comprise 34% of M ori sites on DoC land, the proportion of p over the whole of the western Bay is only 8%. The disparities raise the issue of protecting a representative range of sites, in addition to those which are most visible.

| Site Type | Recorded | Protected | Disparities in the proportions of archaeological site types recorded in the western Bay and those given additional protection by local or central government. |
|--------------------|--------------------|-------------------|---|
| P | 520 (8%) | 130 (29%) | |
| Pits &/or Terraces | 2502 (37%) | 65 (15%) | |
| Middens & ovens | 3141 (46%) | 130 (29%) | |
| Other | 612 (9%) | 118 (27%) | |
| Total | 6775 (100%) | 443 (100%) | |

(Note: there may be some duplication in the numbers of sites in the protected list. This does not alter the percentages significantly.)

In addition to known archaeological sites, 140 p , urup , wahitapu and other sites significant to M ori have been listed or scheduled. Of the p , most of those of significance to M ori will also have been recorded by archaeologists, creating a degree of overlap (although there may be some differences between the two groups in the use of the term õp ö). In all, it is estimated that up to 500 places have been granted additional protection as sites of significance archaeologically or to M ori. The rationale for, and appropriateness, of some (particularly archaeological sites in the Athenree area) may be open to question. There is little consistency in the way the bodies involved present their lists of protected heritage sites and, to impose a degree of order, it is suggested that all agencies could adopt the use of NZAA Site Record Numbers, now generally accepted as a nationally-consistent database.

Sites of archaeological and traditional significance which have been listed by Heritage NZ, scheduled by Tauranga and Western Bay Councils, or are managed by the Regional Council or the Department of Conservation are listed in the attached Appendix, also available as an *Excel* spreadsheet.

| Reference (1) | Ref. (2) | Name | Description | NZAA | Archaeological Type | HNZPT |
|---------------|-----------------------------|------|-------------|----------|---------------------|-------|
| BoPRC | Papamoa Hills Regional Park | | | U14/1652 | p | |
| BoPRC | Papamoa Hills Regional Park | | | U14/1653 | p | |
| BoPRC | Papamoa Hills Regional Park | | | U14/1654 | pits, terraces | |
| BoPRC | Papamoa Hills Regional Park | | | U14/1655 | pits, terraces | |
| BoPRC | Papamoa Hills Regional Park | | | U14/1656 | pits, terraces | |
| BoPRC | Papamoa Hills Regional Park | | | U14/1657 | pits, terraces | |
| BoPRC | Papamoa Hills Regional Park | | | U14/1658 | pits, terraces | |
| BoPRC | Papamoa Hills Regional Park | | | U14/1659 | pits, terraces | |
| BoPRC | Papamoa Hills Regional Park | | | U14/1660 | p | |
| BoPRC | Papamoa Hills Regional Park | | | U14/1661 | pits, terraces | |
| BoPRC | Papamoa Hills Regional Park | | | U14/1662 | pits, terraces | |
| BoPRC | Papamoa Hills Regional Park | | | U14/1677 | pits, terraces | |
| BoPRC | Papamoa Hills Regional Park | | | U14/1678 | midden | |
| BoPRC | Papamoa Hills Regional Park | | | U14/1679 | midden | |
| BoPRC | Papamoa Hills Regional Park | | | U14/1680 | midden | |
| BoPRC | Papamoa Hills Regional Park | | | U14/1685 | pits, terraces | |
| BoPRC | Papamoa Hills Regional Park | | | U14/1688 | pits, terraces | |
| BoPRC | Papamoa Hills Regional Park | | | U14/1689 | pits, terraces | |
| BoPRC | Papamoa Hills Regional Park | | | U14/1690 | pits, terraces | |
| BoPRC | Papamoa Hills Regional Park | | | U14/1691 | pits, terraces | |
| BoPRC | Papamoa Hills Regional Park | | | U14/1692 | pits, terraces | |
| BoPRC | Papamoa Hills Regional Park | | | U14/1693 | pits, terraces | |
| BoPRC | Papamoa Hills Regional Park | | | U14/1694 | pits, terraces | |
| BoPRC | Papamoa Hills Regional Park | | | U14/1695 | pits, terraces | |
| BoPRC | Papamoa Hills Regional Park | | | U14/1696 | pits, terraces | |
| BoPRC | Papamoa Hills Regional Park | | | U14/1697 | pits, terraces | |
| BoPRC | Papamoa Hills Regional Park | | | U14/1823 | findspot | |
| BoPRC | Papamoa Hills Regional Park | | | U14/238 | p | |
| BoPRC | Papamoa Hills Regional Park | | | U14/239 | p | |
| BoPRC | Papamoa Hills Regional Park | | | U14/240 | p | |
| BoPRC | Papamoa Hills Regional Park | | | U14/241 | p | |
| BoPRC | Papamoa Hills Regional Park | | | U14/247 | p | |
| BoPRC | Papamoa Hills Regional Park | | | U14/3077 | pits, terraces | |
| BoPRC | Papamoa Hills Regional Park | | | U14/3078 | pits, terraces | |

| Reference (1) | Ref. (2) | Name | Description | NZAA | Archaeological Type | HNZPT |
|------------------|--------------------------|------------------------------|---|----------|---------------------|-------|
| BoPRC | | Papamoa Hills Regional Park | | U14/3079 | pits, terraces | |
| BoPRC | | Papamoa Hills Regional Park | | U14/3314 | p | |
| BoPRC | | Papamoa Hills Regional Park | | U14/3359 | mixed soil | |
| BoPRC | | Papamoa Hills Regional Park | | U14/3591 | findspot | |
| BoPRC | | Papamoa Hills Regional Park | | U14/3659 | p | |
| BoPRC | | Papamoa Hills Regional Park | | U14/3744 | pits, terraces | |
| BoPRC | | Papamoa Hills Regional Park | | U14/432 | p | |
| BOPRC Coastal PI | CH1, Map she | Waihi Beach Gold Mining Co. | Three mine shafts on bluff between Waihi Beach and Oroko Bay | | mine | |
| BOPRC Coastal PI | CH2, Map she | Bowentown Jetty | Stone jetty in Anzac Bay, Bowentown Heads. Constructed 1889 | | jetty/wharf | |
| BOPRC Coastal PI | CH3, Map she | Martray Wharf | Located in Boat House Bay on 'Martray' estate property, Orongorongo | | jetty/wharf | |
| BOPRC Coastal PI | CH4, Map she | Motuopae Causeway | Rock causeway from Judea to Motuopae Island in Waikaremoana | | causeway | |
| BOPRC Coastal PI | CH6, Map she | Stone Jetty, Mount Maunganui | 1889 Jetty in Pilot Bay made of rhyolite boulders and surface | | jetty/wharf | 4569 |
| BOPRC Coastal PI | CH8, Map she | Mount Stewart Jetty | (Bob Blakeney's Wharf): Remnants of timber wharf at Ongarua | | jetty/wharf | |
| BOPRC Coastal PI | CH9, Map she | Martha Shipwreck | American whaler about 100 ft long. Built in USA c1805. Located | | shipwreck | |
| BOPRC Coastal PI | CH10, Map sh | Tasman Shipwreck | Wooden steamer, 102 ft long. Built in Auckland c1903 as the | | shipwreck | |
| BOPRC Coastal PI | CH11 | Taupo Shipwreck | Steamer in 38 fathoms between Mayor Island and Motuopae | U13/161 | shipwreck | |
| BOPRC Coastal PI | CH12, Map sh | Taranaki Shipwreck | Steamer built in Scotland in 1865. Sunk at Karewa Island. | | shipwreck | |
| DoC | Aongatete? | | transport | U14/3100 | railway bridge | |
| DoC | Athenree | | defence | U13/46 | p | |
| DoC | Athenree | | food preparation | U13/77 | middens | |
| DoC | Athenree | | gardening/storage | U13/1318 | pits/midden | |
| DoC | Athenree | | gardening/storage | U13/1319 | pit/midden/oven | |
| DoC | Athenree | | food preparation | U13/1320 | midden/hangi | |
| DoC | Athenree Wildlife Refuge | | defence | U13/44 | p | |
| DoC | Hidden Gorge Scenic Res. | | defence | U14/12 | p | |
| DoC | Hidden Gorge Scenic Res. | | defence | U14/1501 | p | |
| DoC | Hidden Gorge Scenic Res. | | defence | U14/1502 | p | |
| DoC | Hidden Gorge Scenic Res. | | food preparation | U14/2305 | midden | |
| DoC | Hidden Gorge Scenic Res. | | food preparation | U14/2408 | midden | |
| DoC | Hidden Gorge Scenic Res. | | defence | U14/2413 | p | |
| DoC | Hidden Gorge Scenic Res. | | gardening/storage | U14/2531 | ruas | |
| DoC | Hidden Gorge Scenic Res. | | defence | U14/2600 | p | |
| DoC | Hidden Gorge Scenic Res. | | domestic & social | U14/3033 | burial | |
| DoC | Hidden Gorge Scenic Res. | | timber | U14/3037 | tramway/tunnel | |

| Reference (1) | Ref. (2) | Name | Description | NZAA | Archaeological Type | HNZPT |
|---------------|---------------------------|------|-------------------|---------|------------------------|-------|
| DoC | Kaharoa Forest | | defence | U15/106 | headland p | |
| DoC | Kaharoa Forest | | other | U15/592 | track | |
| DoC | Kaharoa Forest | | domestic & social | U15/593 | platform/track | |
| DoC | Kaharoa Forest | | domestic & social | U15/594 | terraces/platform | |
| DoC | Kaharoa Forest | | gardening/storage | U15/595 | pit | |
| DoC | Kaharoa Forest | | domestic & social | U15/596 | terrace/track | |
| DoC | Kaharoa Forest | | gardening/storage | U15/597 | pit | |
| DoC | Kaimai-Mamaku Cons. Park | | defence | T13/27 | p | |
| DoC | Kaimai-Mamaku Cons. Park | | gardening/storage | T13/28 | pits/terraces | |
| DoC | Kaimai-Mamaku Cons. Park | | gardening/storage | T13/29 | pits/terraces | |
| DoC | Kaimai-Mamaku Cons. Park | | timber | T13/759 | timber saw pit | |
| DoC | Kaimai-Mamaku Cons. Park | | timber | T13/760 | logging camp | |
| DoC | Kaimai-Mamaku Cons. Park | | timber | T13/761 | kauri dam | |
| DoC | Kaimai-Mamaku Cons. Park | | timber | T13/762 | kauri dam | |
| DoC | Kaimai-Mamaku Cons. Park | | timber | T13/763 | kauri dam | |
| DoC | Kaimai-Mamaku Cons. Park | | timber | T13/764 | kauri dam | |
| DoC | Kaimai-Mamaku Cons. Park | | timber | T13/785 | log skid/bullock track | |
| DoC | Kaimai-Mamaku Cons. Park | | timber | T13/786 | log chute | |
| DoC | Kaimai-Mamaku Cons. Park | | timber | T13/787 | kauri dam | |
| DoC | Kaimai-Mamaku Cons. Park | | gardening/storage | T13/792 | pits/terraces | |
| DoC | Kaimai-Mamaku Cons. Park | | food preparation | T13/793 | midden | |
| DoC | Kaimai-Mamaku Cons. Park | | timber | T13/794 | terrace | |
| DoC | Kaimai-Mamaku Cons. Park | | timber | T13/795 | terrace | |
| DoC | Kaimai-Mamaku Cons. Park | | transport | T14/618 | railway bridge | |
| DoC | Kaimai-Mamaku Cons. Park | | timber | T14/634 | bridge (piers) | |
| DoC | Kaimai-Mamaku Cons. Park | | domestic & social | T14/637 | findspot | |
| DoC | Kaimai-Mamaku Cons. Park | | mining | T14/640 | goldmine | |
| DoC | Kaimai-Mamaku Cons. Park | | gardening/storage | T14/641 | pit | |
| DoC | Kaimai-Mamaku Cons. Park | | gardening/storage | T14/642 | pits | |
| DoC | Kaimai-Mamaku Cons. Park | | food preparation | T14/643 | ditch/oven | |
| DoC | Kaimai-Mamaku Cons. Park | | gardening/storage | U15/494 | pit | |
| DoC | Kaimai-Mamaku Cons. Park? | | defence | T13/10 | p | |
| DoC | Kaimai-Mamaku Cons. Park? | | transport | T13/338 | railway bridge | |
| DoC | Kaimai-Mamaku Cons. Park? | | timber | T13/339 | bridge pier | |

| Reference (1) | Ref. (2) | Name | Description | NZAA | Archaeological Type | HNZPT |
|---------------|----------|------------------------------|-------------------|----------|----------------------|-------|
| DoC | | Kaimai-Mamaku Cons. Park? | transport | T13/340 | railway bridge | |
| DoC | | Lower Kaituna Wildlife Mgmt. | food preparation | U14/1850 | midden/ovenstones | |
| DoC | | Lower Kaituna Wildlife Mgmt. | domestic & social | U14/2731 | findspot | |
| DoC | | Mangaorewa | defence | U15/116 | p | |
| DoC | | Motuotau Island Scenic Res. | domestic & social | U14/339 | island | |
| DoC | | Omanawa | defence | U14/1500 | p | |
| DoC | | Omanawa Scenic Res. | gardening/storage | U14/2159 | rua | |
| DoC | | Omanawa? | gardening/storage | U14/2172 | pits | |
| DoC | | Omokoroa? | food preparation | U14/2685 | midden | |
| DoC | | Orokawa Bay-Waihi Beach? | food preparation | U13/532 | midden. | |
| DoC | | Orokawa Bay-Waihi Beach? | food preparation | U13/753 | midden | |
| DoC | | Orokawa Bay-Waihi Beach? | food preparation | U13/755 | midden | |
| DoC | | Orokawa Bay-Waihi Beach? | food preparation | U13/756 | midden/obsidian | |
| DoC | | Orokawa Scenic Res. | defence | T13/16 | p | |
| DoC | | Orokawa Scenic Res. | defence | T13/26 | p | 6303 |
| DoC | | Orokawa Scenic Res. | defence | T13/808 | p | |
| DoC | | Orokawa Scenic Res. | domestic & social | T13/809 | terraces/midden | |
| DoC | | Orokawa Scenic Res. | domestic & social | T13/810 | terraces/midden | |
| DoC | | Orokawa Scenic Res. | food preparation | T13/811 | midden | |
| DoC | | Orokawa Scenic Res. | food preparation | T13/812 | midden | |
| DoC | | Orokawa Scenic Res. | food preparation | T13/856 | midden | |
| DoC | | Orokawa Scenic Res. | defence | U13/34 | p | |
| DoC | | Orokawa Scenic Res. | defence | U13/35 | p | |
| DoC | | Orokawa Scenic Res. | defence | U13/36 | p | 6317 |
| DoC | | Orokawa Scenic Res. | defence | U13/38 | p | |
| DoC | | Orokawa Scenic Res. | food preparation | U13/970 | midden | |
| DoC | | Orokawa Scenic Res. | domestic & social | U13/1237 | findspot obsidian | |
| DoC | | Orokawa Scenic Res. | defence | U13/1240 | p | |
| DoC | | Orokawa Scenic Res. | domestic & social | U13/1242 | working floor/midden | |
| DoC | | Oropi? | domestic & social | U14/2177 | occupied ridge | |
| DoC | | Otanewainuku Forest | gardening/storage | U15/264 | pit | |
| DoC | | Otawa Scenic Res. | defence | U14/15 | p | |
| DoC | | Otawa Scenic Res. | domestic & social | U14/1629 | cave | |
| DoC | | Otawa-Papamoa? | defence | U14/37 | p | |

| Reference (1) | Ref. (2) | Name | Description | NZAA | Archaeological Type | HNZPT |
|---------------|-------------------------------|-----------------------------|-------------------|----------|---------------------|-------|
| DoC | Otawa-Papamoa? | | gardening/storage | U14/2526 | rua | |
| DoC | Pokopoko Stream Scenic Res. | | defence | U15/101 | ridge p | |
| DoC | Pokopoko Stream Scenic Res. | | defence | U15/102 | ridge spur p | |
| DoC | Tanners Point Marginal Strip | | food preparation | U13/524 | midden | |
| DoC | Tanners Point Marginal Strip | | food preparation | U13/752 | midden | |
| DoC | Te Puna Stream Marginal Strip | | domestic & social | U14/1365 | burial cave | |
| DoC | Unnamed Afforestation Res. | | food preparation | U15/524 | midden | |
| DoC | Unnamed Afforestation Res. | | food preparation | U15/525 | midden | |
| DoC | Unnamed Crown Land | | defence | U14/278 | p | |
| DoC | Unnamed Crown Land | | gardening/storage | U14/3034 | pits | |
| DoC | Unnamed Crown Land | | food preparation | U14/3035 | oven/pits | |
| DoC | Unnamed Crown Land | | gardening/storage | U14/3036 | pits | |
| DoC | Unnamed Crown Land | | defence | U15/129 | p | |
| DoC | Wainui River Scenic Res. | | food preparation | U14/1140 | midden | |
| DoC Active | Kaimai-Mamaku Cons. Park | | timber | T13/765 | logging camp | |
| DoC active | Maungaruahine Pa Hist. Res. | | defence | U15/109 | p | |
| HNZPT List | 4569 | Stone Jetty / Boulder Wharf | Category 2 | U14/361 | wharf | 4569 |
| HNZPT List | 6301 | P | Category 2 | T13/16 | p | 6301 |
| HNZPT List | 6302 | P | Category 2 | T13/18 | p | 6302 |
| HNZPT List | 6303 | P | Category 2 | T13/26 | p | 6303 |
| HNZPT List | 6314 | P | Category 2 | U13/31 | p | 6314 |
| HNZPT List | 6315 | Ridge P | Category 2 | U13/34 | p | 6315 |
| HNZPT List | 6316 | Headland P | Category 2 | U13/35 | p | 6316 |
| HNZPT List | 6317 | Headland P | Category 2 | U13/36 | p | 6317 |
| HNZPT List | 6318 | Headland P | Category 2 | U13/37 | p | 6318 |
| HNZPT List | 6319 | P | Category 2 | U13/38 | p | 6319 |
| HNZPT List | 6321 | P | Category 2 | U13/41 | p | 6321 |
| HNZPT List | 6324 | P | Category 2 | U13/46 | p | 6324 |
| HNZPT List | 6325 | P | Category 2 | U13/47 | p | 6325 |
| HNZPT List | 6326 | P | Category 2 | U13/48 | p | 6326 |
| HNZPT List | 6327 | P | Category 2 | U13/49 | p | 6327 |
| HNZPT List | 6328 | P / Midden / Pits | Category 2 | U13/50 | p | 6328 |
| HNZPT List | 6329 | P | Category 2 | U13/51 | p | 6329 |
| HNZPT List | 6330 | P | Category 2 | U13/52 | p | 6330 |

| Reference (1) | Ref. (2) | Name | Description | NZAA | Archaeological Type | HNZPT |
|---------------|----------|---|----------------|----------|---------------------|-------|
| HNZPT List | 6401 | P | Category 2 | U14/149 | p | 6401 |
| HNZPT List | 6402 | Te Wharo P | P | U14/166 | p | 6402 |
| HNZPT List | 6403 | Kinonui P | Category 2 | U14/173 | p | 6403 |
| HNZPT List | 6404 | Military Camp & old stone steps | Structure | U14/250 | military | 6404 |
| HNZPT List | 6405 | Pits | Category 2 | U14/1699 | pits | 6405 |
| HNZPT List | 6705 | Mangatawa | Category 2 | U14/208 | p | 6705 |
| HNZPT List | 7016 | Elms Mission Station | Historic Area | | mission station | 7016 |
| HNZPT List | 7249 | P / Midden | Category 2 | U13/44 | p | 7249 |
| HNZPT List | 7457 | Ohineangaanga | Wahi Tapu Area | U14/ | | 7457 |
| HNZPT List | 7499 | Papamoa No.2 Burial Reserve | Wahi Tapu Area | U14/ | | 7499 |
| HNZPT List | 7505 | Kairua | Wahi tupuna | U14/205 | | 7505 |
| HNZPT List | 7506 | Kairua | Wahi tupuna | U14/3032 | | 7506 |
| HNZPT List | 7507 | Kairua | Wahi tupuna | U14/3031 | | 7507 |
| HNZPT List | 7508 | Kairua | Wahi tupuna | U14/3030 | | 7508 |
| HNZPT List | 7509 | Kairua | Wahi tupuna | U14/1840 | | 7509 |
| HNZPT List | 7510 | Kairua | Wahi tupuna | U14/206 | | 7510 |
| HNZPT List | 7514 | Kopukairoa | Wahi Tapu Area | | | 7514 |
| HNZPT List | 7641 | Te Houhou Ki Wairakei | Wahi Tapu Area | | | 7641 |
| HNZPT List | 7735 | Te Ranga | Wahi Tapu | | | 7735 |
| HNZPT List | 7738 | Tauranga Bond Store | Category 1 | U14/3148 | building | 7738 |
| HNZPT List | 7774 | Pukehinahina | Wahi Tapu | U14/192 | | 7774 |
| HNZPT List | 9244 | Te Roto Horua | Wahi Tapu | | | 9244 |
| HNZPT List | 9423 | Mauao | Wahi Tapu | U14/149 | | 9423 |
| HNZPT List | 9423 | Mauao | Wahi Tapu | U14/173 | | 9423 |
| HNZPT List | 9423 | Mauao | Wahi Tapu | U14/250 | | 9423 |
| HNZPT List | 9423 | Mauao | Wahi Tapu | U14/3118 | | 9423 |
| HNZPT List | 9423 | Mauao | Wahi Tapu | U14/363 | | 9423 |
| HNZPT List | 9503 | Hopukiore, Moturiki, Motuotau and Te Toka o Marutuahu | Wahi tapu | U14/148 | | 9503 |
| HNZPT List | 9503 | Hopukiore, Moturiki, Motuotau and Te Toka o Marutuahu | Wahi tapu | U14/2707 | | 9503 |
| HNZPT List | 9503 | Hopukiore, Moturiki, Motuotau and Te Toka o Marutuahu | Wahi tapu | U14/364 | | 9503 |

| Reference (1) | Ref. (2) | Name | Description | NZAA | Archaeological Type | HNZPT |
|---------------|----------|---|----------------|---------|---------------------|-------|
| HNZPT List | 9503 | Hopukiore, Moturiki, Motuotau and Te Toka o Marutuahu | Wahi tapu | U14/429 | | 9503 |
| HNZPT List | 9503 | Hopukiore, Moturiki, Motuotau and Te Toka o Marutuahu | Wahi tapu | U14/339 | | 9503 |
| HNZPT List | 9585 | Pukewhanake | Wahi Tapu | U14/827 | | 9585 |
| HNZPT List | 9585 | Pukewhanake | Wahi Tapu | U14/829 | | 9585 |
| HNZPT List | 9585 | Pukewhanake | Wahi Tapu | U14/830 | | 9585 |
| HNZPT List | 9610 | Te Okureitanga o Te Ihu o Tamatekapua | Wahi Tapu | V14/22 | | 9610 |
| HNZPT List | 9610 | Te Okureitanga o Te Ihu o Tamatekapua | Wahi Tapu | V14/23 | | 9610 |
| HNZPT List | 9610 | Te Okureitanga o Te Ihu o Tamatekapua | Wahi Tapu | V14/24 | | 9610 |
| HNZPT List | 9610 | Te Okureitanga o Te Ihu o Tamatekapua | Wahi Tapu | V14/25 | | 9610 |
| HNZPT List | 9610 | Te Okureitanga o Te Ihu o Tamatekapua | Wahi Tapu | V14/71 | | 9610 |
| HNZPT List | 9610 | Te Okureitanga o Te Ihu o Tamatekapua | Wahi Tapu | V14/72 | | 9610 |
| HNZPT List | 9666 | Te Uku o Takakopiri / Te Rae o Papamoa | Wahi Tapu Area | U14/238 | | 9666 |
| HNZPT List | 9666 | Te Uku o Takakopiri / Te Rae o Papamoa | Wahi Tapu Area | U14/239 | | 9666 |
| HNZPT List | 9666 | Te Uku o Takakopiri / Te Rae o Papamoa | Wahi Tapu Area | U14/240 | | 9666 |
| HNZPT List | 9666 | Te Uku o Takakopiri / Te Rae o Papamoa | Wahi Tapu Area | U14/241 | | 9666 |
| HNZPT List | 9666 | Te Uku o Takakopiri / Te Rae o Papamoa | Wahi Tapu Area | U14/242 | | 9666 |
| HNZPT List | 9666 | Te Uku o Takakopiri / Te Rae o Papamoa | Wahi Tapu Area | U14/243 | | 9666 |
| HNZPT List | 9666 | Te Uku o Takakopiri / Te Rae o Papamoa | Wahi Tapu Area | U14/432 | | 9666 |
| HNZPT List | 9787 | Te T huna o Rangataua | Wahi Tapu Area | u14/299 | | 9787 |

| Reference (1) | Ref. (2) | Name | Description | NZAA | Archaeological Type | HNZPT |
|----------------|------------|---|--|----------|---------------------|------------|
| HNZPT List | 9787 | Te T huna o Rangataua | Wahi Tapu Area | u14/300 | | 9787 |
| HNZPT List | 9787 | Te T huna o Rangataua | Wahi Tapu Area | u14/301 | | 9787 |
| HNZPT List | 9787 | Te T huna o Rangataua | Wahi Tapu Area | u14/302 | | 9787 |
| HNZPT List | 9787 | Te T huna o Rangataua | Wahi Tapu Area | u14/305 | | 9787 |
| HNZPT List | 9787 | Te T huna o Rangataua | Wahi Tapu Area | u14/306 | | 9787 |
| HNZPT List | 9852 | Te P o Te Ariki | Wahi Tupuna/Tipuna | | | 9852 |
| HNZPT List | 6304, 6343 | 71 sites: Middens, made soil, findspots, pits, terraces | T13/31,032; U13/40-043, 053-065, 066-072, 075-103, 878-880, 882-886, 888-893, 896-899. | | | 6304, 6343 |
| TCC 7E Te Tumu | | | | U14/40 | p | |
| TCC 7E Te Tumu | | | | U14/185 | ovens | |
| TCC 7E Te Tumu | | | | U14/186 | middens | |
| TCC 7E Te Tumu | | | | U14/220 | p | |
| TCC 7E Te Tumu | | | | U14/249 | midden | |
| TCC 7E Te Tumu | | | | U14/1738 | p | |
| TCC 7E Te Tumu | | | | U14/1739 | midden | |
| TCC 7E Te Tumu | | | | U14/1740 | midden | |
| TCC 7E Te Tumu | | | | U14/1742 | urup | |
| TCC 7E Te Tumu | | | | U14/1743 | p | |
| TCC 7E Te Tumu | | | | U14/2848 | midden | |
| TCC 7E Te Tumu | | | | U14/2849 | midden | |
| TCC 7E Te Tumu | | | | U14/3038 | midden | |
| TCC 7E Te Tumu | | | | U14/3039 | midden | |
| TCC 7E Te Tumu | | | | U14/3040 | midden | |
| TCC 7E Te Tumu | | | | U14/3041 | midden | |
| TCC 7E Te Tumu | | | | U14/3042 | terraces/midden | |
| TCC 7E Te Tumu | | | | U14/3045 | occup tion | |
| TCC 7E Te Tumu | | | | U14/3048 | midden | |
| TCC 7E Te Tumu | | | | U14/3049 | midden | |
| TCC 7E Te Tumu | | | | U14/3050 | occup tion | |
| TCC 7E Te Tumu | | | | U14/3051 | terraces/midden | |
| TCC 7E Te Tumu | | | | U14/3052 | midden | |
| TCC 7E Te Tumu | | | | U14/3053 | midden | |
| TCC 7E Te Tumu | | | | U14/3064 | midden | |

| Reference (1) | Ref. (2) | Name | Description | NZAA | Archaeological Type | HNZPT |
|-----------------|----------|--------------------------|---|----------|---------------------|-------|
| TCC Appendix 7B | M01 | Mauao Maunganui | maunga korero | U14/149 | p | 9423 |
| TCC Appendix 7B | M01 | Mauao Maunganui | maunga korero | U14/173 | p , terraces & m | 9423 |
| TCC Appendix 7B | M01 | Mauao Maunganui | maunga korero | U14/250 | military camp, st | 9423 |
| TCC Appendix 7B | M01 | Mauao Maunganui | maunga korero | U14/362 | wai p tukakahu | 9423 |
| TCC Appendix 7B | M01 | Mauao Maunganui | maunga korero | U14/3118 | p | 9423 |
| TCC Appendix 7B | M02 | Kapakapa | punawai (freshwater spring) | | | |
| TCC Appendix 7B | M03 | Urupa | urup | | | |
| TCC Appendix 7B | M04 | Papa o Wharia | P and tuahu. | U14/213 | p | |
| TCC Appendix 7B | M04 | Papa o Wharia | P site and tuahu. | U14/1003 | midden/oven | |
| TCC Appendix 7B | M05 | Te Ruahinahina | Puna wairua | | | |
| TCC Appendix 7B | M06 | Te Roto Parera | P and kainga | U14/1011 | terraces and midden | |
| TCC Appendix 7B | M07 | | Tauranga Waka | | | |
| TCC Appendix 7B | M08 | Hauhaenga | P tuwatawata | | | |
| TCC Appendix 7B | M09 | | Okohanga Food harvest area | | | |
| TCC Appendix 7B | M10 | Kaitere Valley | Rawa Tuturu / Customary Resources | | | |
| TCC Appendix 7B | M11 | Ranginui Te Kaponga | grave | | | |
| TCC Appendix 7B | M12 | Pukehinahina, Pukerohutu | Gate P Battle site | U14/192 | p | |
| TCC Appendix 7B | M13 | Otumoetai | P | U14/202 | p | |
| TCC Appendix 7B | M13 | Otumoetai | P site | U14/2685 | midden/oven | |
| TCC Appendix 7B | M14 | Oreanui | P site | | | |
| TCC Appendix 7B | M15 | | P site | | | |
| TCC Appendix 7B | M16 | Pohue | P site | U14/2698 | midden/oven | |
| TCC Appendix 7B | M16 | Pohue | P site | U14/2699 | midden/oven | |
| TCC Appendix 7B | M16 | Pohue | P site | U14/2742 | pit/terrace | |
| TCC Appendix 7B | M17 | Puketoromiro | P | U14/326 | p | 7774 |
| TCC Appendix 7B | M17 | Puketoromiro | P site | U14/1042 | pit/terrace | |
| TCC Appendix 7B | M18 | Te Ana o Tutarawananga | Korero Tuturu / Historical | U14/2667 | unrecorded middens | |
| TCC Appendix 7B | M19 | Pukehinahina | Waro, burial area, waahi tapu | U14/192 | gunfighter p | |
| TCC Appendix 7B | M20 | | Waahi tapu area, rua, koiwi and old burial area | | | |
| TCC Appendix 7B | M21 | | Waahi tapu burial area | | | |
| TCC Appendix 7B | M22 | Ngararanui | Wharenui site | U14/2663 | midden | |
| TCC Appendix 7B | M22 | Ngararanui | Wharenui site | U14/2664 | midden/oven | |
| TCC Appendix 7B | M23 | Poike | urup | | | |

| Reference (1) | Ref. (2) | Name | Description | NZAA | Archaeological Type | HNZPT |
|-----------------|----------|-----------------------------|--------------------------|----------|---------------------|-------|
| TCC Appendix 7B | M24 | Tutarawanaga | P site | U14/2669 | midden/oven | |
| TCC Appendix 7B | M25 | Waitaia | urup and waahi tapu | | | |
| TCC Appendix 7B | M26 | Waipapa | P site | | | |
| TCC Appendix 7B | M27 | Waipapa | Waahi tapu | | | |
| TCC Appendix 7B | M28 | Titirua | P | U14/230 | p | |
| TCC Appendix 7B | M29 | Te Motu 0 Puhi (Rat Island) | Korero Tuturu Historical | U14/2696 | find spot | |
| TCC Appendix 7B | M29 | Te Motu 0 Puhi (Rat Island) | Korero Tuturu Historical | U14/2703 | midden/rua | |
| TCC Appendix 7B | M30 | Te Pahou | P area | | | |
| TCC Appendix 7B | M31 | Rakei Ridge Pa (No.2) | P site | U14/2039 | terraces and pits | |
| TCC Appendix 7B | M31 | Rakei Ridge Pa (No.2) | P site | U14/2056 | pit/terrace | |
| TCC Appendix 7B | M32 | Rakei Ridge Pa (No.3) | P site | | | |
| TCC Appendix 7B | M33 | Rakei Ridge Pa (No.4) | P site | | | |
| TCC Appendix 7B | M34 | Rakei Ridge Pa (No.5) | P site | | | |
| TCC Appendix 7B | M35 | Ridge Pa Site | P site | U14/1614 | midden/oven | |
| TCC Appendix 7B | M36 | Large Ridge Pa | P site | | | |
| TCC Appendix 7B | M37 | Oruamatua | P | U14/164 | p | |
| TCC Appendix 7B | M38 | Owhauwhina | P | U14/312 | p | |
| TCC Appendix 7B | M38 | Owhauwhina | P site | U14/2072 | pit/terrace | |
| TCC Appendix 7B | M39 | | P site | U14/325 | p | |
| TCC Appendix 7B | M39 | | P site | U14/2023 | midden/oven | |
| TCC Appendix 7B | M40 | Ranginui | P site | U14/3129 | terrace | |
| TCC Appendix 7B | M40 | Ranginui | P site | U14/3130 | terrace | |
| TCC Appendix 7B | M41 | Te Arika Pa / Maungatapu Pa | P complex | U14/174 | p | |
| TCC Appendix 7B | M42 | Te Hono Pa | P site | U14/253 | midden/oven | |
| TCC Appendix 7B | M43 | Te Maire | P site | U14/254 | midden/oven | |
| TCC Appendix 7B | M44 | Te Ngaio | P | U14/201 | p | |
| TCC Appendix 7B | M45 | Te Puru / Opupu | P site | U14/255 | midden/oven | |
| TCC Appendix 7B | M45 | Te Puru / Opupu | P site | U14/256 | midden/terrace | |
| TCC Appendix 7B | M46 | Te Tokitoki | P | U14/228 | p | |
| TCC Appendix 7B | M47 | Whenua Hou | P site | | | |
| TCC Appendix 7B | M48 | Te Ouwe | P | U14/257 | p | |
| TCC Appendix 7B | M49 | Omanu Pa | P , urup | U14/198 | p | |
| TCC Appendix 7B | M50 | Otumoko | P site, urup | U14/169 | p | |
| TCC Appendix 7B | M50 | Otumoko | P site, urup | U14/2578 | midden/oven | |

| Reference (1) | Ref. (2) | Name | Description | NZAA | Archaeological Type | HNZPT |
|-----------------|----------|---|---|----------|---------------------|-------|
| TCC Appendix 7B | M50 | Otumoko | P site, urup | U14/2579 | midden/oven | |
| TCC Appendix 7B | M50 | Otumoko | P site, urup | U14/2580 | obsidian/find spot | |
| TCC Appendix 7B | M51 | Wharekaia | P site | | | |
| TCC Appendix 7B | M52 | Mataniho Point | P site | U14/2565 | midden | |
| TCC Appendix 7B | M53 | Mangatawa, Maungamana, Hikurangi, Hangahanga, Kawhainui | series of P | U14/207 | p | |
| TCC Appendix 7B | M53 | Mangatawa, Maungamana, Hikurangi, Hangahanga, Kawhainui | series of P | U14/208 | p | |
| TCC Appendix 7B | M53 | Mangatawa, Maungamana, Hikurangi, Hangahanga, Kawhainui | series of P | U14/209 | p | 6705 |
| TCC Appendix 7B | M54 | Karikari | Kainga | U14/298 | p | |
| TCC Appendix 7B | M55 | Karikari | urup | U14/298 | p | |
| TCC Appendix 7B | M56 | Tauwhakatiki (Romainohotangi) | urup | | | |
| TCC Appendix 7B | M57 | Tamapahore | urup | | | |
| TCC Appendix 7B | M58 | Waitahanui | urup | U14/360 | urup | 7499 |
| TCC Appendix 7B | M59 | Pukekohatu | P | U14/206 | p | |
| TCC Appendix 7B | M60 | Kowhararahi Pa (Owhararahi) | P | U14/205 | p | |
| TCC Appendix 7B | M61 | Rewarewa | P | U14/1821 | p | |
| TCC Appendix 7B | M62 | Te Tikitiki a Te Rangihouhiri | P | U14/1822 | terrace and pits | |
| TCC Appendix 7B | M63 | Kurukuruhua | P | U14/204 | p | |
| TCC Appendix 7B | M64 | Upuhue Pa (Orea a Kai) | P | U14/168 | p | |
| TCC Appendix 7B | M65 | Ohotuatahi | P site | U14/306 | midden | |
| TCC Appendix 7B | M66 | Ruakirikiri | Waahi P rekura battle area | | | |
| TCC Appendix 7B | M67 | Te Waiu o te Tohora Puna | wai tapu | | | |
| TCC Appendix 7B | M68 | Wairakei | Rohe a iwi - Boundary marker | | | |
| TCC Appendix 7B | M69 | Te Akau | burials, archaeological sites | | | |
| TCC Appendix 7B | M70 | Pataka Kai O Nga Tupuna | Customary Resources | | | |
| TCC Appendix 7B | M71 | | P | U14/2821 | swamp p | |
| TCC Appendix 7B | M72 | Waahi Tapu | Multiple archaeological sites within area | | | |
| TCC Appendix 7B | M73 | Te Houhou ki Owairakei | Approx.20 sites - midden, terraces, garden soils. | | | |

| Reference (1) | Ref. (2) | Name | Description | NZAA | Archaeological Type | HNZPT |
|-----------------|----------|------------------------------|---|----------|-----------------------------|-------|
| TCC Appendix 7B | M73 | Te Houhou ki Owairakei | | U14/1726 | p | 7641 |
| TCC Appendix 7B | M74 | Te Karaka | P | U14/1738 | p | |
| TCC Appendix 7B | M75 | Te Paroa | flax trade P | U14/1743 | p | |
| TCC Appendix 7B | M76 | Te Kopua | P | U14/220 | p | |
| TCC Appendix 7B | M77 | Te Karaka | P | U14/1738 | p | |
| TCC Appendix 7B | M78 | | urup | U14/1742 | burial ground | |
| TCC Appendix 7B | M79 | | P | U14/221 | p | |
| TCC Appendix 7B | M80 | Paroa/Paraoa | P | U14/1743 | p | |
| TCC Appendix 7B | M80 | Paroa/Paraoa | P site | U14/1878 | hangi | |
| TCC Appendix 7B | M81 | Te Tumu | P | V14/40 | p | |
| TCC Appendix 7D | A01 | Fergusson Park | | U14/2683 | midden | |
| TCC Appendix 7D | A01 | Fergusson Park | | U14/3305 | midden | |
| TCC Appendix 7D | A02 | Hopukioire Mount Drury | P , midden, terraces, caves and military camp | U14/429 | p , military | |
| TCC Appendix 7D | A03 | Houhainga Pa | | U14/916 | p | |
| TCC Appendix 7D | A04 | Karikari Pa | | U14/298 | p | |
| TCC Appendix 7D | A05 | Kowhahararahi | | U14/205 | p | |
| TCC Appendix 7D | A06 | Mauao summit P | | U14/149 | p | |
| TCC Appendix 7D | A06 | Mauao western P /Kinonui's P | | U14/173 | p | |
| TCC Appendix 7D | A06 | Mauao | | U14/250 | stone steps | |
| TCC Appendix 7D | A06 | Mauao | | U14/251 | trail | |
| TCC Appendix 7D | A06 | Mauao | | U14/361 | stone jetty | |
| TCC Appendix 7D | A06 | Mauao | | U14/362 | jetty and water tanks | |
| TCC Appendix 7D | A06 | Mauao Maunganui pa | | U14/3118 | p | |
| TCC Appendix 7D | A07 | Monmouth Redoubt | | U14/174 | redoubt | |
| TCC Appendix 7D | A08 | Motuopuhi Island | | U14/2073 | pits /midden | |
| TCC Appendix 7D | A09 | Otamataha Pa | | U14/189 | mission cemetery | |
| TCC Appendix 7D | A09 | Otamataha Pa | | U14/2075 | p | |
| TCC Appendix 7D | A10 | Oto tu taihi Pa Island Pa | | U14/306 | midden | |
| TCC Appendix 7D | A11 | Oruamatua Pa | | U14/164 | p , terraces, pits, middens | |
| TCC Appendix 7D | A12 | Otumoetai Pa | | U14/202 | p | |
| TCC Appendix 7D | A14 | Peterimha Pa | | U14/223 | p , urup | |
| TCC Appendix 7D | A14 | Peterimha Pa | | U14/914 | midden | |

| Reference (1) | Ref. (2) | Name | Description | NZAA | Archaeological Type | HNZPT |
|-----------------|----------|----------------------------------|-------------------|----------|---------------------|-------|
| TCC Appendix 7D | A15 | Pukehinahina Gate Pa | | U14/192 | p | |
| TCC Appendix 7D | A16 | Pukekohatu Pa | | U14/206 | p | |
| TCC Appendix 7D | A16 | Pukekohatu Pa | | U14/1820 | pit/terrace | |
| TCC Appendix 7D | A16 | Pukekohatu Pa | | U14/3030 | pit/terrace | |
| TCC Appendix 7D | A17 | Puketoromiro Pa | | U14/326 | p | |
| TCC Appendix 7D | A18 | Swamp Pa | | U14/1068 | p | |
| TCC Appendix 7D | A19 | Terrace and Midden sites | | U14/545 | midden | |
| TCC Appendix 7D | A19 | Terrace and Midden sites | | U14/546 | midden | |
| TCC Appendix 7D | A19 | Terrace and Midden sites | | U14/2670 | pit/terrace | |
| TCC Appendix 7D | A19 | Terrace and Midden sites | | U14/2671 | pit/terrace | |
| TCC Appendix 7D | A19 | Terrace and Midden sites | | U14/2673 | pit/terrace | |
| TCC Appendix 7D | A19 | Terrace and Midden sites | | U14/2674 | pit/terrace | |
| TCC Appendix 7D | A19 | Terrace and Midden sites | | U14/3198 | pit/terrace | |
| TCC Appendix 7D | A19 | Terrace and Midden sites | | U14/3199 | pit/terrace | |
| TCC Appendix 7D | A20 | Te Auhi | | U14/233 | p | |
| TCC Appendix 7D | A21 | Te Ouwe Pa | | U14/257 | p | |
| TCC Appendix 7D | A22 | Te Pa Hou | | U14/190 | p , urup | |
| TCC Appendix 7D | A23 | The Elms | | U14/2926 | mission station | |
| WBoP Schedule3 | 1 | Opureora | P Site | | | |
| WBoP Schedule3 | 2 | Te Awakeri a Waharoa Opureora | Cutting | | | |
| WBoP Schedule3 | 3 | Tauaroa | P Site | | | |
| WBoP Schedule3 | 4 | Pukemanuka | P Site | | | |
| WBoP Schedule3 | 5 | Rangiata | P Site | | | |
| WBoP Schedule3 | 6 | Waihirere | P Site | | | |
| WBoP Schedule3 | 7 | Opuhi | P Site | | | |
| WBoP Schedule3 | 8 | Ratahi | Rock | | | |
| WBoP Schedule3 | 9 | Te Umu ki Maketu | Freshwater Spring | | | |
| WBoP Schedule3 | 10 | Ngamata kerewhana | Ridge | | | |
| WBoP Schedule3 | 11 | Matakana or Flax Point | | | | |
| WBoP Schedule3 | 12 | Tahutara | P Site | | | |
| WBoP Schedule3 | 13 | Maramarua | Pukehina Beach | | | |
| WBoP Schedule3 | 14 | Ng ti Whakahemo | P Site | | | |
| WBoP Schedule3 | 15 | P Site | | | | |

| Reference (1) | Ref. (2) | Name | Description | NZAA | Archaeological Type | HNZPT |
|----------------|----------|--------------------------|--|------|---------------------|-------|
| WBoP Schedule3 | 16 | Oreiwata P Site | Burial Ground Reserve Pohutukawa and Karaka trees and trenches | | | |
| WBoP Schedule3 | 17 | Waiheke P Site | Pohutukawas and trenches | | | |
| WBoP Schedule3 | 18 | Marae | Ng ti Whakahemo | | | |
| WBoP Schedule3 | 19 | Te Rekereke o Maruahaira | Spring | | | |
| WBoP Schedule3 | 20 | Te Pareoterawahiria | Pa Site | | | |
| WBoP Schedule3 | 21 | Te Raupare | Beach | | | |
| WBoP Schedule3 | 22 | P Maurea | P Site and burial ground | | | |
| WBoP Schedule3 | 23 | Marae | Ng ti M kino | | | |
| WBoP Schedule3 | 24 | Ko Whitiwhiti | P Site | | | |
| WBoP Schedule3 | 25 | Pukehina School Site | | | | |
| WBoP Schedule3 | 26 | Kauri Point | Waahi Tapu | | | |
| WBoP Schedule3 | 27 | P Site | Ngai Tamawhariua | | | |
| WBoP Schedule3 | 28 | Urup | Ngai Tamawhariua | | | |
| WBoP Schedule3 | 29 | Urup | Ngai Tamawhariua | | | |
| WBoP Schedule3 | 30 | P Site | Ngai Tamawhariua | | | |
| WBoP Schedule3 | 31 | Urup | Ngai Tamawhariua | | | |
| WBoP Schedule3 | 32 | P Site | Ngai Tamawhariua | | | |
| WBoP Schedule3 | 33 | P Site | Ngai Tamawhariua | | | |
| WBoP Schedule3 | 34 | P Site | Ngai Tamawhariua | | | |
| WBoP Schedule3 | 35 | P Site and Urup | Ngai Tamawhariua | | | |
| WBoP Schedule3 | 36 | P Site and Urup | Ngai Tamawhariua | | | |
| WBoP Schedule3 | 37 | P Site | Ngai Tamawhariua | | | |
| WBoP Schedule3 | 38 | P Site | Ngai Tamawhariua | | | |
| WBoP Schedule3 | 39 | P Site | Ngai Tamawhariua | | | |
| WBoP Schedule3 | 40 | P Site and Urup | Ngai Tamawhariua | | | |
| WBoP Schedule3 | 41 | P Site and Urup | Ngai Tamawhariua | | | |
| WBoP Schedule3 | 42 | P Site | Ngai Tamawhariua | | | |
| WBoP Schedule3 | 43 | P Site | Ngai Tamawhariua | | | |
| WBoP Schedule3 | 44 | Urup | Ngai Tamawhariua | | | |
| WBoP Schedule3 | 45 | Urup | Ngai Tamawhariua | | | |
| WBoP Schedule3 | 46 | Urup | Ngai Tamawhariua | | | |
| WBoP Schedule3 | 47 | P Site | Ngai Tamawhariua | | | |
| WBoP Schedule3 | 48 | P Site | Ngai Tamawhariua | | | |

| Reference (1) | Ref. (2) | Name | Description | NZAA | Archaeological Type | HNZPT |
|----------------|----------|-----------------------------|------------------|------|---------------------|-------|
| WBoP Schedule3 | 49 | P Site and Urup | Ngai Tamawhariua | | | |
| WBoP Schedule3 | 50 | P Site | Ngai Tamawhariua | | | |
| WBoP Schedule3 | 51 | P Site | Ng ti P kenga | | | |
| WBoP Schedule3 | 52 | Whetu | Marae | | | |
| WBoP Schedule3 | 53 | Paepaekohatu | P Site | | | |
| WBoP Schedule3 | 54 | Papa kanui | P Site | | | |
| WBoP Schedule3 | 55 | Te Pa o Te Matau | P Site | | | |
| WBoP Schedule3 | 56 | Te Wharo | P Site | | | |
| WBoP Schedule3 | 57 | Hikutawatawa | P Site | | | |
| WBoP Schedule3 | 58 | P Site | Ng ti P kenga | | | |
| WBoP Schedule3 | 59 | Te Arawa Memorial | Whakaue | | | |
| WBoP Schedule3 | 60 | Te Ihu o Tamatekapua | Whakaue | | | |
| WBoP Schedule3 | 61 | Te Kahika | Marae | | | |
| WBoP Schedule3 | 62 | Tawakepito | Marae | | | |
| WBoP Schedule3 | 63 | Hopuatamitami Ngati Tukehe | Marae | | | |
| WBoP Schedule3 | 64 | Kenana | Urup | | | |
| WBoP Schedule3 | 65 | Ohokino | Marae | | | |
| WBoP Schedule3 | 66 | Paetawa | Urup | | | |
| WBoP Schedule3 | 67 | Tawakepito | Urup | | | |
| WBoP Schedule3 | 68 | Ngati Moko (Waitangi) | Marae | | | |
| WBoP Schedule3 | 69 | Tuhourangi | Marae | | | |
| WBoP Schedule3 | 70 | Ngati Marukukere (Te Paamu) | Marae | | | |
| WBoP Schedule3 | 71 | Ngati Kuri (Te Matai) | Marae | | | |
| WBoP Schedule3 | 72 | Te Eka o Te Rangi | Urup | | | |
| WBoP Schedule3 | 73 | Kenana (old) | Urup | | | |
| WBoP Schedule3 | 74 | Kenana (new) | Urup | | | |
| WBoP Schedule3 | 75 | Kenana | P Site | | | |
| WBoP Schedule3 | 76 | Whakaue | Marae | | | |
| WBoP Schedule3 | 77 | P Site | Tapuika | | | |
| WBoP Schedule3 | 78 | P Site | Tapuika | | | |
| WBoP Schedule3 | 79 | Hei | Marae | | | |
| WBoP Schedule3 | 80 | Haraki | Marae | | | |
| WBoP Schedule3 | 81 | Te Awhe | Marae | | | |
| WBoP Schedule3 | 82 | Puketoki | P Site | | | |

| Reference (1) | Ref. (2) | Name | Description | NZAA | Archaeological Type | HNZPT |
|----------------|----------|-----------------------------|--------------------------|---------|---------------------|-------|
| WBoP Schedule3 | 83 | Kauri Point | P Site | | | |
| WBoP Schedule3 | 84 | Hikurangi | Ng ti Ranginui | | | |
| WBoP Schedule3 | 85 | Te Kura a Maia | P Site | | | |
| WBoP Schedule3 | 86 | Koutunui | P Site | | | |
| WBoP Schedule3 | 87 | Otawhiwhi | P Site | | | |
| WBoP Schedule3 | 88 | Tangitu | Urup | | | |
| WBoP Schedule3 | 89 | Te Atua Kahe | P Site | | | |
| WBoP Schedule3 | 90 | Waihuri | P Site | | | |
| WBoP Schedule3 | 91 | Ongarahu | P Site | | | |
| WBoP Schedule3 | 92 | Huharua | P Site | | | |
| WBoP Schedule3 | 93 | Wilson Road Cultural site | | | | |
| WBoP Schedule3 | 95 | Wilson Road Cultural Site | | | | |
| WBoP Schedule3 | 96 | Angus Lane Cultural site | | | | |
| WBoP Schedule3 | 97 | Citrus Avenue Cultural site | | | | |
| WBoP Schedule3 | 100 | P Site | Pirirakau/Ng ti Ranginui | | | |
| WBoP Schedule3 | 101 | Pohutukawa Drive, Athenree | P site | | | |
| WBoP Schedule3 | 102 | Bowentown | | | | |
| WBoP Schedule3 | 103 | Kauri Point | | | | |
| WBoP Schedule3 | 104 | Pukemanaka | P | | | |
| WBoP Schedule3 | 105 | Tuapiro Point | | | | |
| WBoP Schedule3 | 106 | Ongare Point | P | U13/8 | p | |
| WBoP Schedule3 | 107 | Tawhitinui | P | U14/160 | gunfighter p | |
| WBoP Schedule3 | 108 | Te Irihanga | P | U14/328 | p | |
| WBoP Schedule3 | 110 | Te Wharo | P | U14/166 | p | |
| WBoP Schedule3 | 111 | Te Wharo | P | U14/167 | p | |
| WBoP Schedule3 | 112 | Maungarangi | P | U14/234 | p | |
| WBoP Schedule3 | 113 | Te Inahi | P | U14/244 | p | |
| WBoP Schedule3 | 114 | Papamoa Hills Regional Park | | | | |
| WBoP Schedule3 | 115 | Herekaki | P | V14/10 | p | |
| WBoP Schedule3 | 115 | Owhara | P | V14/2 | p | |
| WBoP Schedule3 | 116 | Pukemaire | Fort Colville | V14/6 | p | |
| WBoP Schedule3 | 117 | Pukepoto P | P | V14/13 | p | |
| WBoP Schedule3 | 118 | Okurei P | P | V14/22 | p | |
| WBoP Schedule3 | 119 | | Scarp/Pit | V14/23 | p | |

| Reference (1) | Ref. (2) | Name | Description | NZAA | Archaeological Type | HNZPT |
|----------------|----------|---------------------|-------------|--------|---------------------|-------|
| WBoP Schedule3 | 120 | | P Site | V14/24 | p | |
| WBoP Schedule3 | 121 | Tirotirowhetu | P | V14/25 | p | |
| WBoP Schedule3 | 122 | P Site | P | V14/26 | p | |
| WBoP Schedule3 | 123 | | P Site | V14/31 | | |
| WBoP Schedule3 | 124 | Pukehina | P /Redoubt | V14/3 | p /redoubt | |
| WBoP Schedule3 | 125 | Waeheke, Karamurumu | P | V14/5 | p | |